

BOAT HOUSE BULLETIN®



A FACTUAL REPORT FROM THE MERCURY MARINE ENGINEERING AND EVALUATION CENTER



BOAT SPECIFICATIONS

Manufacturer	Caravelle Powerboats
Website	www.caravelleboats.com
Boat Model	237 LS
Bottom Style/Paint	V-Bottom
Material	Fiberglass
Length	23' 5"
Beam	8' 6"
Transom Height	N/A
Transom Angle	N/A
Deadrise Angle	20
Max HP Capacity	320
Fuel tank capacity	53 gallons
Steering type	Cable w/power
Dry Boat Weight (published)	4000
X-Dimension (MC)	N/A
Mounting Bolt hole (OB)	N/A

TEST CONDITIONS

Test Date	6/13/2006
Test Conductors	T Hayes
Boat Weight as tested	Not Weighed
Load (people & gear (lbs))	450 LBS
Air Temperature	90
Elevation (ft.)	250 ft
Wind Velocity (MPH)	5 to 10
Fresh/Salt H2O	Fresh
Fuel Level at testing (gal)	52 gal

ENGINE SPECIFICATIONS

Engine	350 Mag
Horsepower	300
Cylinders	8
Gear Ratio	1.50:1
Model Number	need data
Engine Installation Height (OB)	N/A

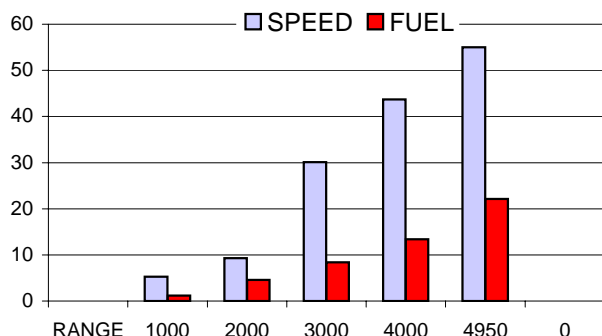
PERFORMANCE SUMMARY

Top Speed (MPH@RPM)	55.0 MPH @ 4950 RPM
Acceleration 0 - 20 MPH(sec)	6.13
Acceleration 0 - 30 MPH(sec)	8.43

PROPELLER SPECIFICATIONS

Part Number	48-16316A46
Mercury Name	Vengeance
Diameter/Pitch	14 X 19
No. of blades	3
Material	Stainless Steel

PERFORMANCE CURVE



PERFORMANCE DATA

RPM RANGE	SPEED MPH	FUEL GPH
1000	5.3	1.2
2000	9.3	4.6
3000	30.1	8.4
4000	43.7	13.4
4950	55	22.1
0	0	0

MERCURY MARINE W6250 PIONEER ROAD FOND DU LAC, WISCONSIN 54935

©2006, Mercury Marine, All Rights Reserved. Results on individual boats may vary depending on many factors, including weather and the condition of propeller, lower unit and boat bottom.

800-MERCURY MERCURYMARINE.COM